

# FOCUS ON *BRIDGES & WATERWAYS*

[ FOCUS ]

[ FOCUS ]

PHOTOGRAPHIC  
COMPETITION

The purpose of this annual competition is to grow the photographic history collection of Birtwistle Local Studies Library. It is designed to capture aspects of the City as it looks today, and to encourage donations of historic photos for viewing by future generations.

This competition is open to amateur photographers aged 18+ who reside in Western Australia.

## PRIZES IN EACH CATEGORY

1st Prize	\$300 & Professional Print of image
2nd Prize	\$200 & Professional Print of image
3rd Prize	\$100 & Professional Print of image

## IMPORTANT DATES

Entries Open	1 February
Entries Close	31 March
Winners Announced	22 May
Winners' Exhibition	25 May to 7 June at Armadale Library

## MORE INFORMATION

Visit [library.armadale.wa.gov.au/focus](http://library.armadale.wa.gov.au/focus) for full competition details and how to enter. Please read the Terms and Conditions to make sure you meet the entry requirements.

## BIRTWISTLE LOCAL STUDIES LIBRARY (INSIDE ARMADALE LIBRARY)

Armadale Central Shopping Centre  
64/10 Orchard Avenue, Armadale

Visit [library.armadale.wa.gov.au/focus](http://library.armadale.wa.gov.au/focus)

If you have any questions, please contact  
Birtwistle Local Studies Library at

EMAIL: [birtwistle@armadale.wa.gov.au](mailto:birtwistle@armadale.wa.gov.au)

PHONE: (08) 9394 5641

# FOCUS ON *BRIDGES & WATERWAYS*

ENTRIES OPEN  
**1 FEB – 31 MAR 2026**

VISIT  
[LIBRARY.ARMADALE.WA.GOV.AU/FOCUS](http://LIBRARY.ARMADALE.WA.GOV.AU/FOCUS)

PHOTOGRAPHIC  
COMPETITION

2026





## FOCUS ON - *BRIDGES & WATERWAYS* PHOTOGRAPH CATEGORY

## FOCUS ON - *BRIDGES & WATERWAYS* DRONE CATEGORY

## OPEN THEME HISTORICAL PRE-2000 CATEGORY



The bridges and waterways of our district can tell amazing stories.

We are seeking present day photographs that capture the City's waterways, both natural and man-made, and bridges over water or roads.

Submit photos that showcase our bridges and waterways within the context of their surrounding landscape.

### Prizes

1st Prize: \$300 & Professional Print of image

2nd Prize: \$200 & Professional Print of image

3rd Prize: \$100 & Professional Print of image

### Note:

Visit our website for suggestions as to the different types of waterways to photograph.



Photography from above can tell a different story.

We are seeking drone photographs that capture the uniqueness of the City's waterways both natural and man-made, and bridges over water or roads.

Submit photos that are a snapshot of our bridges and waterways within their surrounding landscape.

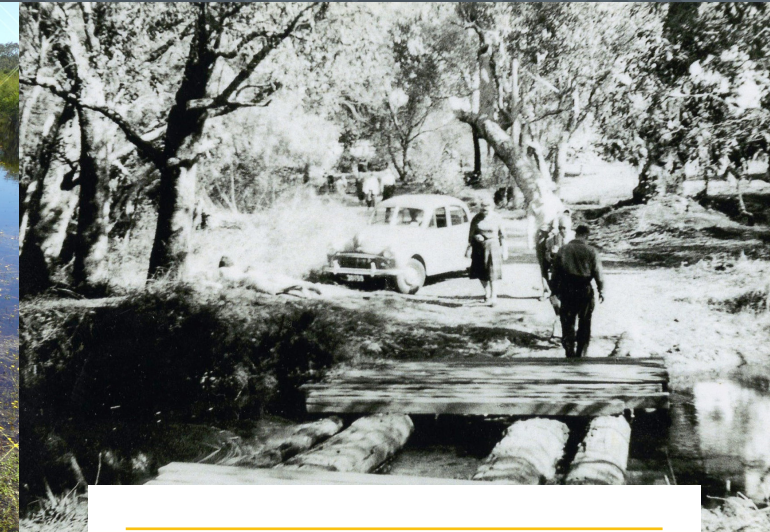
### Prizes

1st Prize: \$300 & Professional Print of image

2nd Prize: \$200 & Professional Print of image

3rd Prize: \$100 & Professional Print of image

Please read and comply with the FOCUS 2026 Photographic Competition Terms & Conditions, in particular point 13 which refers to drone use.



Have you got history hidden at home?

We are seeking images showing any aspect of how life was in Kelmscott, Armadale, Roleystone, Forrestdale, or any of the suburbs within the City of Armadale's borders before the year 2000.

These photographic memories are history waiting to be shared. So open your old photo albums and show us how our district looked decades ago!

### Prizes

1st Prize: \$300 & Professional Print of image

2nd Prize: \$200 & Professional Print of image

3rd Prize: \$100 & Professional Print of image